

# Model



TL 35 V2



TL 50

## Detector Specifications

Type	Uncooled Vox	
Resolution, pixels	384X288	
Pixel size, μm	12	
NETD, mK	≤40	
Frame Rate, Hz	50	

## Optical Specifications

Objective Lens, mm	35	50
Field of View (H×V) , °	7.5x5.6	5.2x4.0
Linear Field of View (H×V) , m at 100m	13.1x9.9	9.2x6.9
Optical Magnification, ×	3.0	4.0
Digital Zoom, ×	1~4	
Eye Relief, mm	70	
Exit pupil Diameter, mm	6	
Diopter, D	-4~+4	
Detection Range, m (Target size: 1.7m×0.5m, P(n)=99%)	1800	2600

## Display Specifications

Type	AMOLED	
Resolution,pixels	1024*768	

## Battery Power Supply

Battery	Built-in battery/6600mAh + replaceable 18500 battery/3.7V	
Max. Operating Time (t=22°C), h*	15	
External Power Supply	5V (Type C)	

## Functions

Wi-Fi/APP	Support (InfiRay outdoor)	
Photo/Video Recorder	Support	
MIC	Support	
Bluetooth	Support	

## Operational Characteristics

Memory Capacity, GB	32GB	
IP rating	IP67	
Operating Temperature, °C	-20 ~ +50	
Max. recoil power on rifled weapon (Eo), Joules	6000	
Compatible mounts	Standard 30 mm rings	
Weight (without the 18500 battery), g	<950	<985
Dimension, mm	385× 85 × 75	390× 85 × 75



IRay Technology Co., Ltd.

Tel: 400-998-3088

Fax: +86-535-3410604

Mail: infirayoutdoor@infiray.com

Web: www.infirayoutdoor.com

Add: 11th Guiyang Street, YEDA, Yantai 264006, P.R.China



# Tube Series

## TL50/TL35V2

The TL50/TL35V2 adds new functions to the former TL35 such as an expandable Laser Ranging Function to provide distance measurement, the upgraded OLED display and the built-in Mic to record sound. After the amelioration, the Tube TL50 will better serve as your night tool while keeping a traditional day scope appearance.



**Ultra-Precise boosted by accurate distance measurement (upgraded)**

**Bluetooth LRF Optional**

TL50/ TL35V2 comes with an option of an expandable Laser Ranging Finder Function. TL50/ TL35V2 is able to provide the distance measurement on the screen when the LRF is connected to the device through Bluetooth, earning you more chances to win in every shooting.



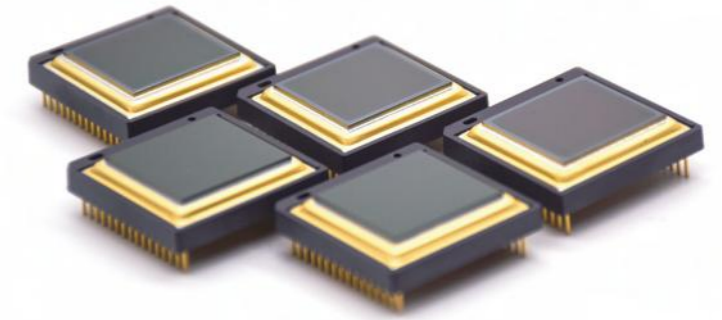
**Stadiametric Rangefinding**

TL50/ TL35V2 is equipped with the practical stadiametric rangefinding function to provide position reference for hunting. It will be automatically turned off once the bluetooth LRF is connected.



**12 μm Pixel Pitch**

Featuring the self-researched, high-performance 12um detector, TL50/ TL35V2 is able to provides high quality and detailed images.



**Sufficient Operation Time and Flexible Battery Choice**

The working time of built-in battery is up to 12 hours, and the replaceable 18500 battery will provide an additional 3 hours of operation.

**Detection Range, m (Target size: 1.7m×0.5m, P(n)=99%)**

Combining the extraordinary sensor and the powerful optics, TL50/ (TL35V2) can achieve the detection range up to 2600m (1800m) .

**The appearance of traditional dayscope**

The Tube Series was designed from the ground up for optimal use on bolt action rifles and other platforms that demand flexible mounting options with increased eye relief. The traditional style housing allows for mounting with standard 30mm rings like a typical day scope.

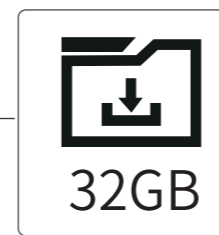
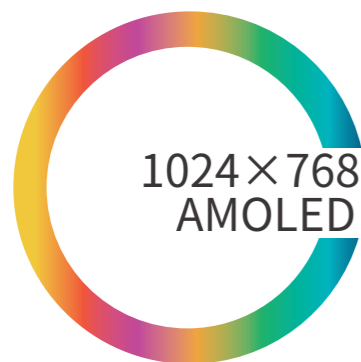


**15h+**



**1024X768 AMOLED Display**

TL50/ TL35V2 adopts a 1024X768 AMOLED display instead of a 1280x960 LCOS display of TL35. The imaging quality will be improved a lot for an AOLED display will offer better layers and contrast.



**32GB**

TL50/ TL35V2 comes with 32GB of memory for storing 57,000 images or 48 hours of video. Captured videos and images can be easily transferred to your smartphone at lightning speed via app.



**Built-in microphone (upgraded)**

TL50/ TL35V2 is equipped with a MIC function, therefore customers can record the voice too when recording.

**Ultraclear Mode**

Built-in ultraclear mode is designed for bad weather conditions, such as heavy fog and rain. It will make the Tube series more sensitive and capable of providing more details.

