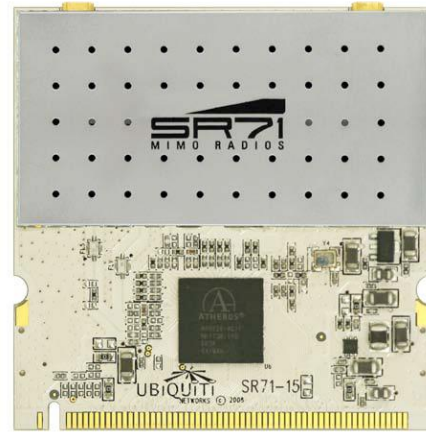




# SR71-15

Hi Performance 5GHz 802.11n Radio Module



CARD INFORMATION					
Wireless Chipset	Atheros AR9220 with DFS SUPPORT				
Radio Operation	IEEE 802.11 a/n				
Interface	32-bit mini-PCI Type IIIA				
Operation Voltage	3.3VDC				
Antenna Ports	(2) MMCX for 2x2 MIMO Operation				
Temperature Range	-40C to +85C (extended temp version up to +95C)				
Security	802.11i with AES-CCM & TKIP Encryption, 802.1x, 64/128/152bit WEP				
Data Rates	Legacy 802.11a/b/g (1-54Mbps), 802.11n (up to 300Mbps)				
RoHS Compliance	YES				
REGULATORY INFORMATION					
Wireless Modular Approvals	FCC , Industry Canada, CE				
OPERATING FREQUENCY 5475-5825 MHz					
TX POWER SPECIFICATIONS (combined)			RX SPECIFICATIONS		
	DataRate	Avg. TX	Tolerance		
11a	1-24Mbps	25 dBm	+/-2dB	11a	
	36Mbps	24 dBm	+/-2dB		
	48Mbps	22 dBm	+/-2dB		
	54Mbps	21 dBm	+/-2dB		
5GHz 11n HT20	MCS0	25 dBm	+/-2dB	5GHz 11n HT20	
	MCS1	25 dBm	+/-2dB		
	MCS2	25 dBm	+/-2dB		
	MCS3	24 dBm	+/-2dB		
	MCS4	23 dBm	+/-2dB		
	MCS5	22 dBm	+/-2dB		
	MCS6	21 dBm	+/-2dB		
	MCS7	19 dBm	+/-2dB		
	MCS8	25 dBm	+/-2dB		
	MCS9	25 dBm	+/-2dB		
	MCS10	25 dBm	+/-2dB		
	MCS11	24 dBm	+/-2dB		
	MCS12	23 dBm	+/-2dB		
	MCS13	22 dBm	+/-2dB		
	MCS14	21 dBm	+/-2dB		
MCS15	19 dBm	+/-2dB			
	DataRate	Sensitivity	Tolerance		
	1-24Mbps	-97 dBm	+/-3dB		
	36Mbps	-90 dBm	+/-3dB		
	48Mbps	-86 dBm	+/-3dB		
	54Mbps	-84 dBm	+/-3dB		
	MCS0	-97 dBm	+/-3dB		
	MCS1	-96 dBm	+/-3dB		
	MCS2	-93 dBm	+/-3dB		
	MCS3	-91 dBm	+/-3dB		
	MCS4	-87 dBm	+/-3dB		
	MCS5	-84 dBm	+/-3dB		
	MCS6	-78 dBm	+/-3dB		
	MCS7	-75 dBm	+/-3dB		
	MCS8	-98 dBm	+/-3dB		
	MCS9	-97 dBm	+/-3dB		
	MCS10	-94 dBm	+/-3dB		
	MCS11	-92 dBm	+/-3dB		
	MCS12	-88 dBm	+/-3dB		
	MCS13	-85 dBm	+/-3dB		
	MCS14	-79 dBm	+/-3dB		
	MCS15	-76 dBm	+/-3dB		
AVG. CURRENT CONSUMPTION INFORMATION					
MODE		6Mbps	MCS0, HT20	MCS15, HT20	MCS15, HT40
100% TX (using TX99 test tool)		1.30A	1.30A	0.70A	0.70A
Real-World (using iPerf long file transfer)		0.75A	0.75A	0.50A	0.50A
Idle		0.25A	0.25A	0.25A	0.25A
RANGE PERFORMANCE					
Indoor (Antenna Dependent):					Up to 200meters
Outdoor (Antenna Dependent):					Over 50km
For help with special driver support, please e-mail support@ubnt.com					

