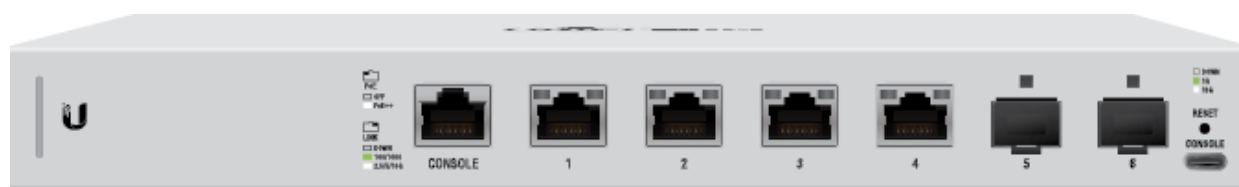


US-XG-6POE Quick Start Guide

dl.ubnt.com/qsg/US-XG-6POE/US-XG-6POE_EN.html



Package Contents



UniFi Switch



Mount Brackets (Qty. 2)



Bracket Screws (Qty. 8)



Mounting Screws (Qty. 4)



Screw Anchors (Qty. 4)



Power Adapter



Power Cord

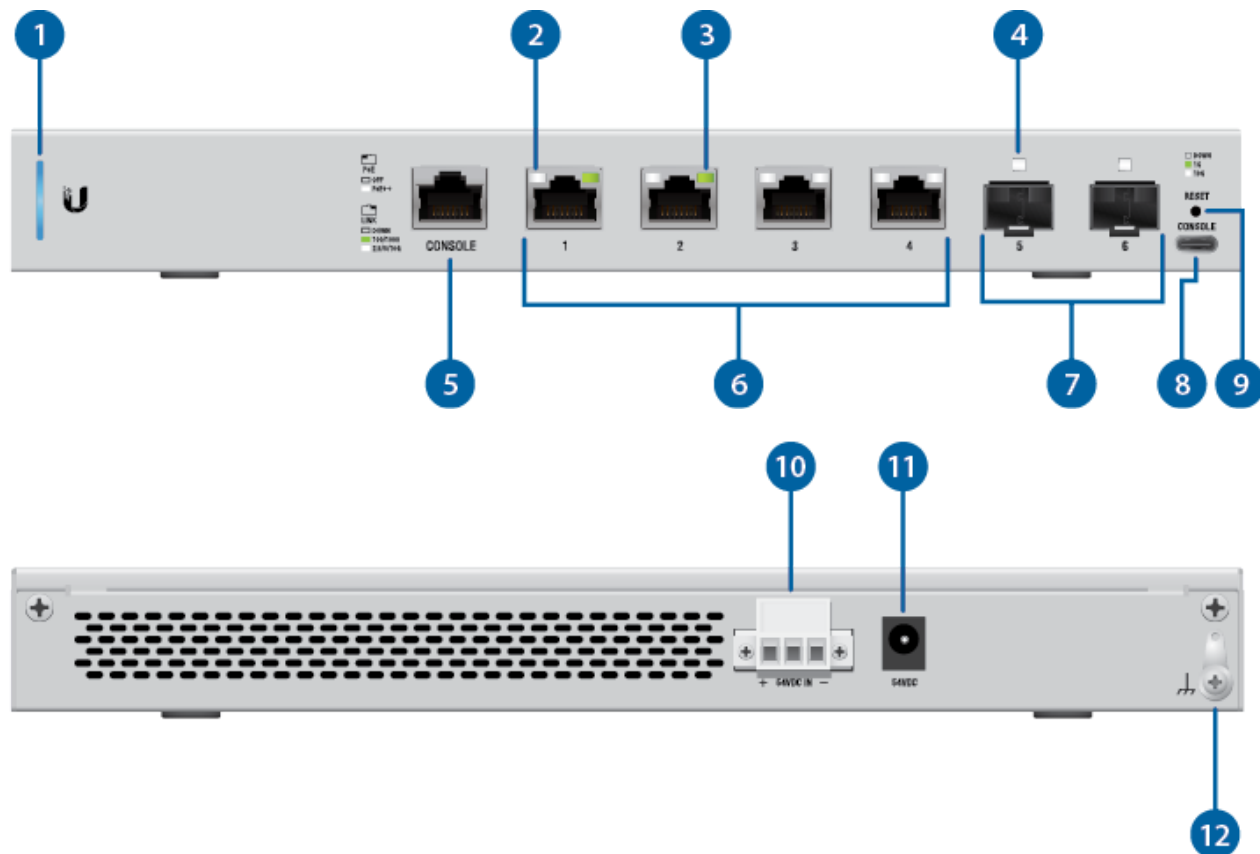


Cable Clip

System Requirements

- Linux, Mac OS X, or Microsoft Windows 7/8/10
- Java Runtime Environment 1.8 or above recommended
- Web Browser: Google Chrome (Other browsers may have limited functionality)
- UniFi Controller software v5.8.x (or newer), available at: ui.com/download/unifi

Hardware Overview



1

System LED

Flashing White	Initializing.
Steady White	Factory defaults, waiting for adoption.
Alternating White/Blue	Device is busy; do not touch or unplug it. This usually indicates that a process such as a firmware upgrade is taking place.
Steady Blue	Successfully adopted by a network and working properly.

Flashing Blue	<p>This is used to locate a device.</p> <p>When you click Locate in the UniFi Controller software, the System LED will flash blue. The software will also display the location of the UniFi Switch on the map.</p>
---------------	--

2

RJ45 PoE LED (Ports 1 - 4)

Off	PoE Disabled
White	802.3af/at/bt PoE

3

RJ45 Link/Speed/Activity LED (Ports 1 - 4)

Off	No Link
Green	<p>Link Established at 1 Gbps</p> <p>Flashing Indicates Activity</p>
White	<p>Link Established at 10 Gbps</p> <p>Flashing Indicates Activity</p>

4

SFP+ Link/Speed/Activity LED (Ports 5 - 6)

Off	No Link
Green	<p>Link Established at 1 Gbps</p> <p>Flashing Indicates Activity</p>
White	<p>Link Established at 10 Gbps</p> <p>Flashing Indicates Activity</p>

5

RJ45 Console Port

RJ45 serial console port for Command Line Interface (CLI) management. Use an RJ45-to-DB9, serial console cable, also known as a rollover cable, to connect the Console port to your computer. Then configure the following settings as needed:

- Baud rate 115200
- Data bits 8
- Parity NONE
- Stop bits 1
- Flow control NONE

6

RJ45 (Ports 1 - 4)

RJ45 ports support 100 Mbps or 1/2.5/5/10 Gbps Ethernet connections and 802.3af/at/bt PoE output.

7

SFP+ (Ports 5 - 6)

Hot-swappable SFP+ ports support 1/10 Gbps connections.

8

USB Console Port

USB Type C console port for Command Line Interface (CLI) management.

9

Reset Button

This button serves two functions for the UniFi Switch:

- Restart Press and release the Reset button quickly.
- Restore to Factory Default Settings Press and hold the Reset button for more than five seconds.

10

DC Input

Optional DC input for connecting a stand-alone or redundant DC power source (not included) with minimum power: 40W, 44 to 57VDC.



Note: Ensure the polarity is correct: red is positive (+) and black is negative (-).

You can use the redundant DC power source as a hot spare; if there is no longer power through the Power port, the UniFi Switch will switch to the DC power source without interrupting its operation.

11

Power Port

Connect the included Power Adapter to the Power port.

12

Ground

Ancillary grounding point for enhanced ESD protection.

Hardware Installation

The UniFi Switch can be mounted on a horizontal or vertical surface.



WARNING: The US-XG-6POE must not be stacked. Do not place it on top of another switch. Do not place anything on top of the US-XG-6POE.

Grounding (Recommended)

The UniFi Switch is grounded through the Power Adapter; however, you can add optional ESD grounding for enhanced ESD protection.



Note: You also have the option to use the Cable Clip to secure the cord of the Power Adapter. For instructions, proceed to ["Using the Cable Clip \(Optional\)"](#).

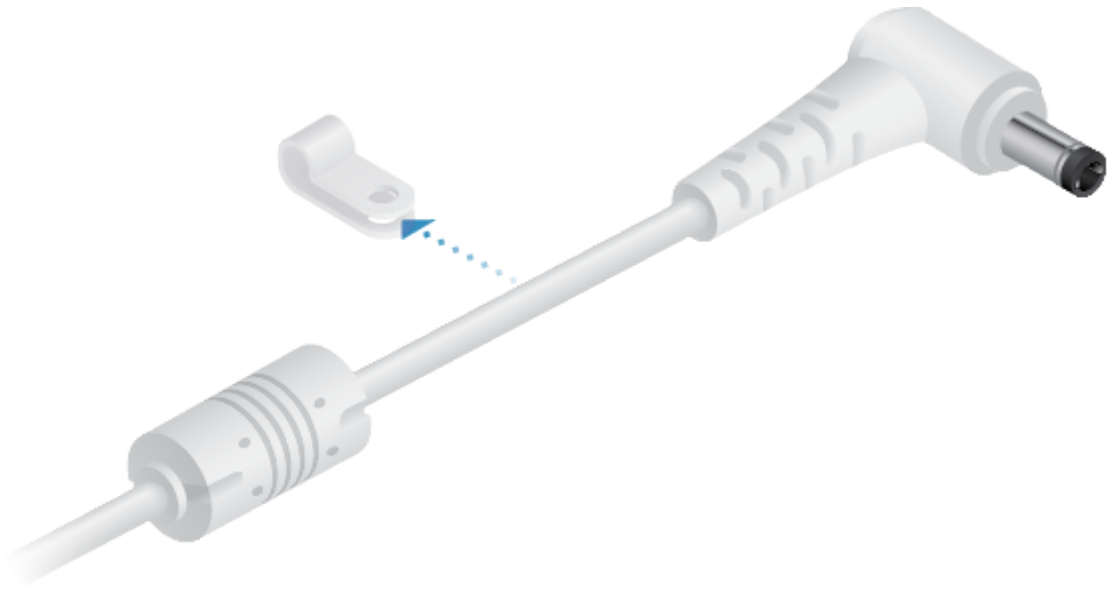


Using the Cable Clip (Optional)

1.



2.



3.



4.



Connecting Power

You have two options:

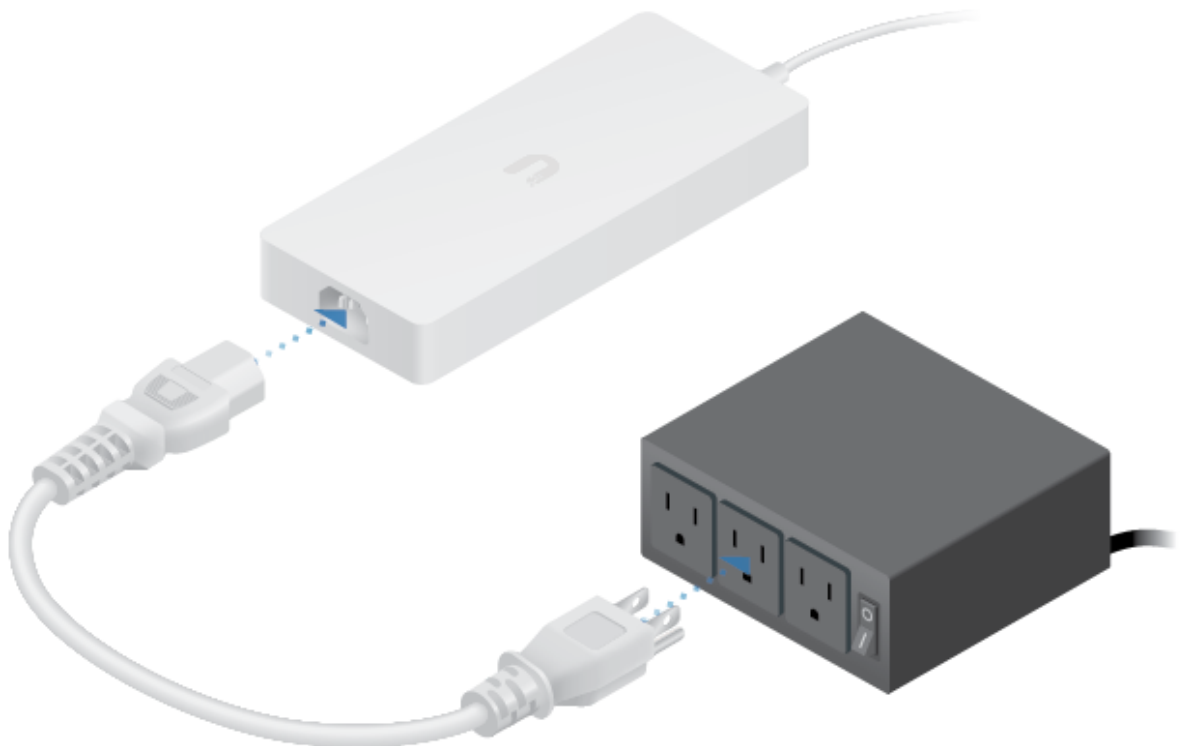
- "Using the Power Adapter"
- "Using the DC Input (Optional)"

Using the Power Adapter

1.



2.



Using the DC Input (Optional)

For stand-alone power or redundant backup, connect a DC power source to the UniFi Switch.

Note: Only one power source can be used at any one time. With both power sources connected, the input with the highest voltage will be used; the other power source defaults to backup.



Wire a DC/DC cable (not included) to the DC Input. Ensure the polarity is correct: red is positive (+) and black is negative (-).



Connecting Ethernet



Connecting SFP+

1.



2.



3.



For information about compatible fiber SFP modules, visit: community.ubnt.com/unifi

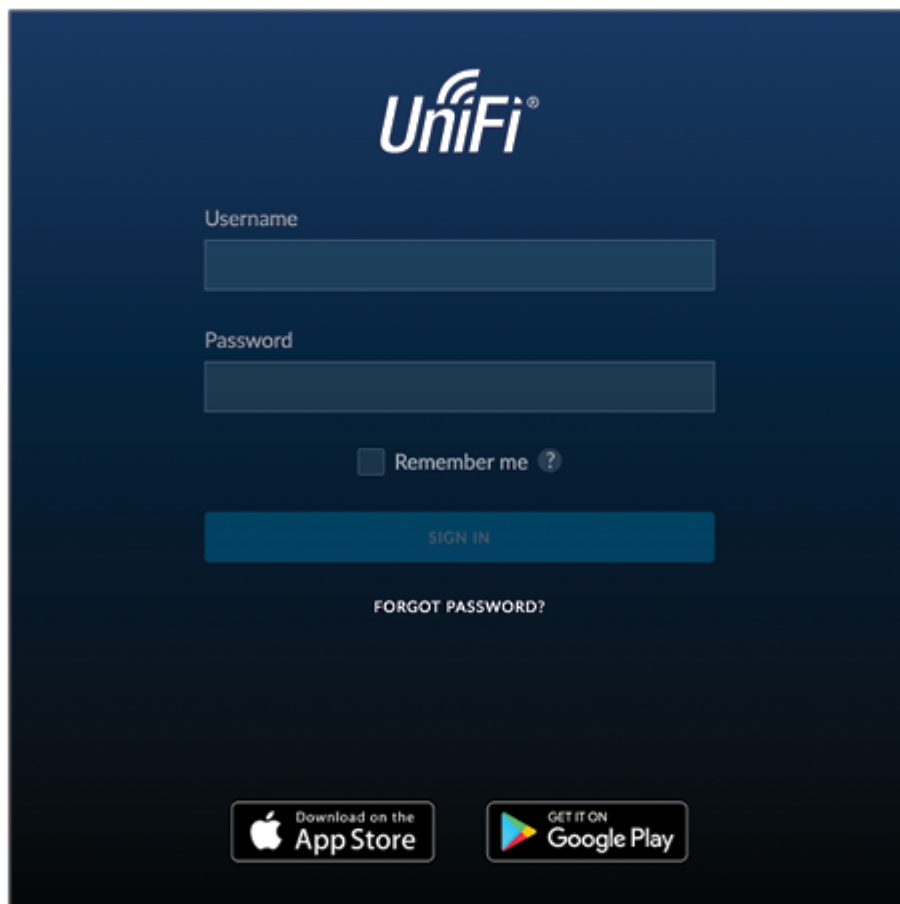
Software Installation

Download and install the latest version of the UniFi Controller software at ui.com/download/unifi and follow the on-screen instructions.



Note: If you already have UniFi Controller v5.8.x or newer installed, skip to the section, "[Adopting the UniFi Switch](#)".

After you have installed the software and run the UniFi Installation Wizard, a login screen will appear for the UniFi Controller management interface. Enter the admin name and password that you created and click Sign In.



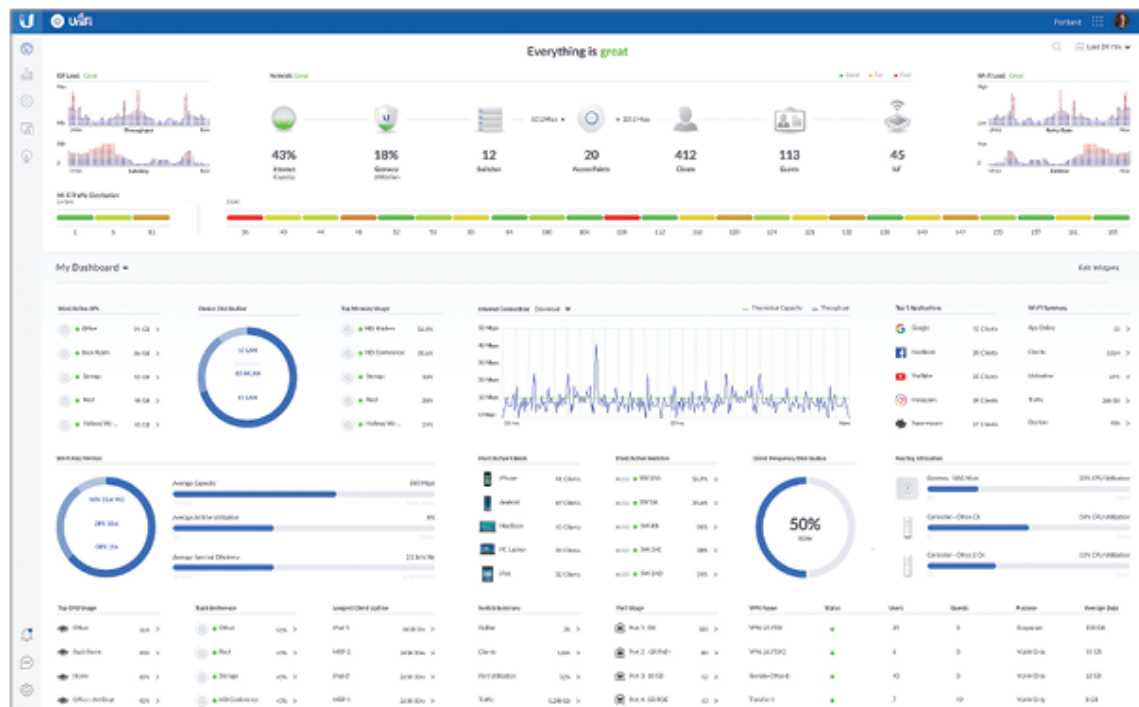
You can manage your network and view network statistics using the UniFi Controller management interface.

To adopt the UniFi Switch, proceed to the section, "[Adopting the UniFi Switch](#)".

For information on configuring and using the UniFi Controller software, refer to the User Guide on the website: ui.com/download/unifi

Adopting the UniFi Switch

1. From the UniFi Controller dashboard, click Devices in the left menu bar.



2. On the Devices screen, locate the UniFi Switch in the list of devices under the Model column. To adopt the UniFi Switch, click Adopt.

DEVICE NAME	IP ADDRESS	STATUS	MODEL	VERSION	UPTIME	ACTIONS
04:18:06:00:77:76	192.168.1.229	PENDING ADOPTION	UniFi Switch XG 4PoE	3.9.38.9078	29m 58s	ADOPT
10:9f:c2:08:f2:a7	192.168.1.14	CONNECTED (1000 FDB)	UniFi Switch 16PoE	3.9.38.9059	1h 10m 34s	LOCATE, RESTART, UPGRADE
80:2a:8c:02:97:57	192.168.1.151	CONNECTED	UniFi AP-AC-Mesh	3.9.38.9078	30m 55s	LOCATE, RESTART, UPGRADE
04:18:06:00:52:90	192.168.1.172	CONNECTED	UniFi Switch 8	3.9.38.9059	2d 1h 40m 7s	LOCATE, RESTART, UPGRADE
78:8a:10:a5:7a:e7	192.168.1.152	CONNECTED	UniFi AP-nanoHD	3.9.38.9078	1d 1h 34m 30s	LOCATE, RESTART, UPGRADE
04:18:06:01:38:e9	192.168.1.158	CONNECTED	UniFi Switch 24 PoE-250W	3.9.38.9059	1h 10m 3s	LOCATE, RESTART, UPGRADE
fc:ec:de:43:26:44	192.168.1.240	CONNECTED	UniFi AP-nanoHD	3.9.38.9058	19h 34m 53s	LOCATE, RESTART, UPGRADE
10:9f:c2:80:e8:20	192.168.1.9	CONNECTED	UniFi AP-LR v2	3.9.38.9059	2d 18h 39m 16s	LOCATE, RESTART, UPGRADE
10:9f:c2:68:84:5f	192.168.1.56	CONNECTED	UniFi Switch 24 AT-250W	3.9.38.9059	7d 1h 56m 45s	LOCATE, RESTART, UPGRADE
80:2a:8c:5f:24:5f	192.168.1.256	CONNECTED	UniFi Switch 16 PoE-150W	3.9.38.9059	7d 1h 49m 40s	LOCATE, RESTART, UPGRADE
80:2a:8c:04:43:c8	192.168.1.234	CONNECTED	UniFi AP v2	3.9.38.9059	2d 18h 40m 18s	LOCATE, RESTART, UPGRADE
04:18:06:03:0f:1a	192.168.1.1	CONNECTED	UniFi Security Gateway 3P	4.4.22.5084045	28d 30h 10m 17s	LOCATE, RESTART, UPGRADE
78:8a:10:a5:2e:0e	192.168.1.234	CONNECTED	UniFi AP-IG	3.9.37.9029	2d 18h 37m 55s	LOCATE, RESTART, UPGRADE
04:18:06:00:9:28	192.168.1.153	CONNECTED	UniFi Switch 8	3.9.38.9059	1h 14m 47s	LOCATE, RESTART, UPGRADE
80:2a:8c:06:7e:44	192.168.1.149	CONNECTED	UniFi AP-AC-Mesh	3.9.38.9059	2d 18h 43m 12s	LOCATE, RESTART, UPGRADE
80:2a:8c:1f:13:43	192.168.1.225	CONNECTED	UniFi AP-Pro	3.9.37.9029	7d 19h 28m	LOCATE, RESTART, UPGRADE
04:18:06:00:45:19	192.168.1.159	CONNECTED	UniFi AP-HD	3.9.38.9059	1d 2h 43m 57s	LOCATE, RESTART, UPGRADE
04:18:06:00:74:24	192.168.1.15	CONNECTED	UniFi Switch 24 PoE	3.9.38.9059	1h 9m 23s	LOCATE, RESTART, UPGRADE
80:2a:8c:2c:8f:d2	192.168.1.170	CONNECTED	UniFi AP	3.9.37.9029	1m	LOCATE, RESTART, UPGRADE
78:8a:10:a5:87:41	192.168.1.17	CONNECTED	UniFi AP-nanoHD	3.9.38.9059	1d 2h 47m 27s	LOCATE, RESTART, UPGRADE
78:8a:10:04:54:3c	192.168.1.7	CONNECTED	UniFi AP-HD	3.9.38.9059	1d 19h 35m 25s	LOCATE, RESTART, UPGRADE
04:18:06:00:12:95	192.168.1.238	CONNECTED	UniFi AP-BeeStationXG	3.9.38.9059	4d 43m 43s	LOCATE, RESTART, UPGRADE

3. The System LED on the UniFi Switch will turn blue to confirm that it has been successfully adopted.

Specifications

US-XG-6POE

Dimensions	165 x 268.1 x 31.8 mm (6.50 x 10.56 x 1.25")
Weight	1.3 kg (2.87 lb)
Interfaces	
Networking	(4) 100 Mbps or 1/2.5/5/10G RJ45 Ports (2) 1/10G SFP+ Ethernet Ports
Management	Ethernet In-Band (1) RJ45 Serial Port Out-of-Band (1) USB Type C Port Out-of-Band
Power Method	54VDC, 3.88A Power Adapter (Included) or 44 to 57VDC, 5.56A DC Input with Terminal Block
Power Supply	External AC/DC Adapter (Included) or DC Power Source
Supported Voltage Range	44 to 57VDC
Max. Power Consumption (Excluding PoE Output)	40W
LEDs	
System	Status
RJ45 Data Ports	PoE; Speed/Link/Activity
SFP+ Data Ports	Link/Activity
ESD/EMP Protection	Air: ± 18 kV, Contact: ± 12 kV
Shock and Vibration	ETSI300-019-1.4 Standard
Operating Temperature	-5 to 45° C (23 to 113° F)
Operating Humidity	5 to 95% Noncondensing

Certifications	CE, FCC, IC
-----------------------	-------------

PoE

PoE Interfaces	PoE++ IEEE 802.3bt (Pair A 1, 2+; 3, 6-) (Pair B 4 , 5+; 7, 8-)
-----------------------	--

Max. 802.3bt Wattage per Port by PSE	60W
---	-----

Voltage Range 802.3af Mode	44-57V
-----------------------------------	--------

Voltage Range 802.3at/bt Mode	50-57V
--------------------------------------	--------

Safety Notices

1. Read, follow, and keep these instructions.
2. Heed all warnings.
3. Only use attachments/accessories specified by the manufacturer.



WARNING: Failure to provide proper ventilation may cause fire hazard. Keep at least 20 mm of clearance next to the ventilation holes for adequate airflow.



WARNING: To reduce the risk of fire or electric shock, do not expose this product to rain or moisture.



WARNING: Do not use this product in location that can be submerged by water.



WARNING: Avoid using this product during an electrical storm. There may be a remote risk of electric shock from lightning.

Electrical Safety Information

1. Compliance is required with respect to voltage, frequency, and current requirements indicated on the manufacturer's label. Connection to a different power source than those specified may result in improper operation, damage to the equipment or pose a fire hazard if the limitations are not followed.

2. There are no operator serviceable parts inside this equipment. Service should be provided only by a qualified service technician.
3. This equipment is provided with a detachable power cord which has an integral safety ground wire intended for connection to a grounded safety outlet.
 1. Do not substitute the power cord with one that is not the provided approved type. Never use an adapter plug to connect to a 2-wire outlet as this will defeat the continuity of the grounding wire.
 2. The equipment requires the use of the ground wire as a part of the safety certification, modification or misuse can provide a shock hazard that can result in serious injury or death.
 3. Contact a qualified electrician or the manufacturer if there are questions about the installation prior to connecting the equipment.
 4. Protective earthing is provided by Listed AC adapter. Building installation shall provide appropriate short-circuit backup protection.
 5. Protective bonding must be installed in accordance with local national wiring rules and regulations.

Limited Warranty

ui.com/support/warranty.

The limited warranty requires the use of arbitration to resolve disputes on an individual basis, and, where applicable, specify arbitration instead of jury trials or class actions.

Compliance

FCC

Changes or modifications not expressly approved by the party responsible for compliance could void the user's authority to operate the equipment.

This device complies with Part 15 of the FCC Rules. Operation is subject to the following two conditions.

1. This device may not cause harmful interference, and
2. This device must accept any interference received, including interference that may cause undesired operation.

This equipment has been tested and found to comply with the limits for a Class A digital device, pursuant to Part 15 of the FCC Rules. These limits are designed to provide reasonable protection against harmful interference when the equipment is operated in a commercial environment. This equipment generates, uses, and can radiate radio frequency energy and, if not installed and used in accordance with the instruction manual, may cause harmful interference to radio communications. Operations of this equipment in a residential area is likely to cause harmful interference in which case the user will be required to correct the interference at his own expense.

ISED Canada

CAN ICES-3(A)/NMB-3(A)

Australia and New Zealand



Warning: This equipment is compliant with Class A of CISPR 32. In a residential environment this equipment may cause radio interference.

CE Marking

CE marking on this product represents the product is in compliance with all directives that are applicable to it.



WEEE Compliance Statement

Declaration of Conformity

Online Resources



© 2021 Ubiquiti Inc. All rights reserved.